

# MONTHLY MEMBERSHIP PROGRESS REPORT

District 14 U

Results as of: 6/30/2020

GMT:

LOCATION PENNSYLVANIA

GMT CA

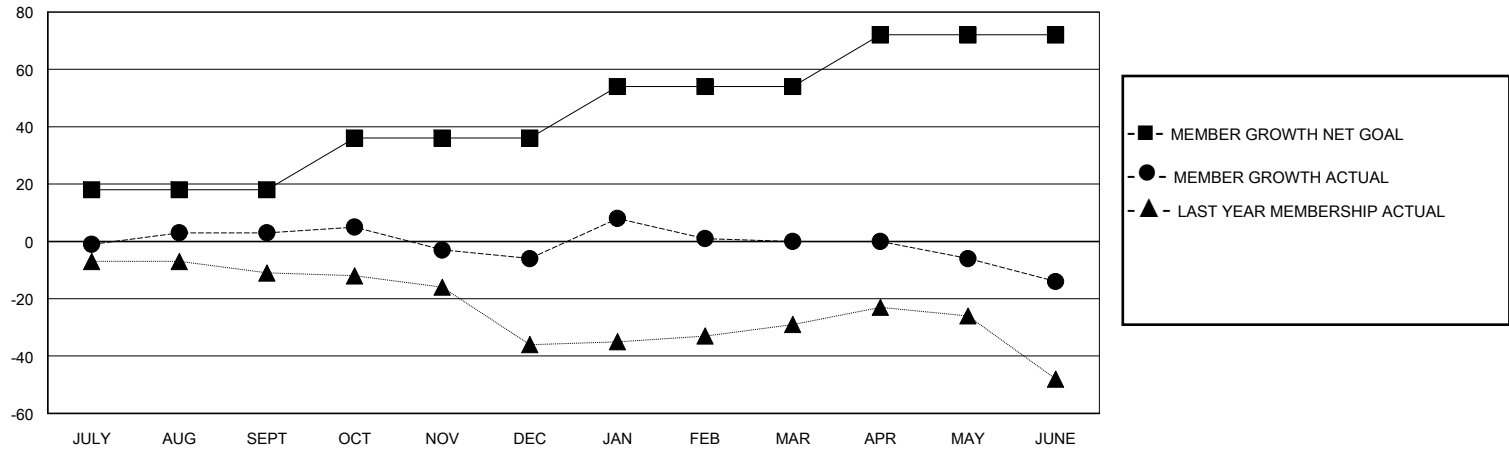
Clubs			
RESULTS FOR 2019-2020			
QUARTER	NEW CLUB GOAL	NEW CLUBS	DROPPED CLUBS
JULY/AUG/SEPT	0	0	0
OCT/NOV/DEC	0	0	1
JAN/FEB/MAR	0	0	0
APR/MAY/JUNE	0	0	0

Members			
RESULTS FOR 2019-2020			
QUARTER	MEMBER GROWTH NET GOAL	MEMBER GROWTH ACTUAL	DROPPED MEMBERS ACTUAL (including transfers)
JULY/AUG/SEPT	18	20	15
OCT/NOV/DEC	18	10	19
JAN/FEB/MAR	18	34	26
APR/MAY/JUNE	18	8	22

GOALS AND ACTUAL NEW CLUBS CUMULATIVE



GOALS AND ACTUAL MEMBERS CUMULATIVE



DROPPED CLUBS: 1	
<b>DROPPED MEMBERS</b>	
DECEASED	13
CLUB CANCELLED	6
OTHER	63
<b>TOTAL</b>	<b>82</b>

22 CLUBS OF 32 ADDED 1 OR MORE NEW MEMBERS

GENDER DISTRIBUTION	
MALE	675 (69.23%)
FEMALE	300 (30.77%)

[CLICK HERE FOR CUMULATIVE MEMBERSHIP DATA](#)

TOTAL FAMILY UNIT MEMBERS	232
FAMILY MEMBERS PAYING HALF DUES	118